



## Track-N-Trace unit without external supply

### Tracking or positioning ... any time, anywhere

Strukton Rail has developed an advanced Track-N-Trace unit that can well be used by owners of rolling stock and equipment. The unit sends the position of the equipment to the owner. The fully standalone operating mode is unique. The unit has an independent power source, without cabling or antennas. It can easily be placed in any carriage, working train or machine, so that the object can always be tracked or traced rapidly.

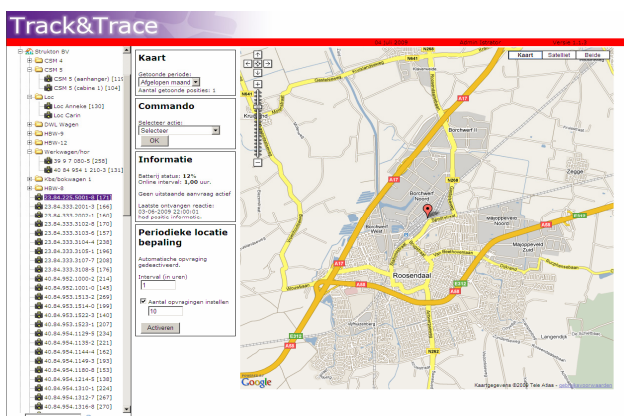
#### Simple position finding

Position finding is extraordinarily easy. Authorised users can request the position of the Track-N-Trace unit through the internet or by simply calling the unit's direct mobile number. This 'wakes' the unit, which will automatically transmit its position. The exact location of the unit will be shown on a map on the internet.

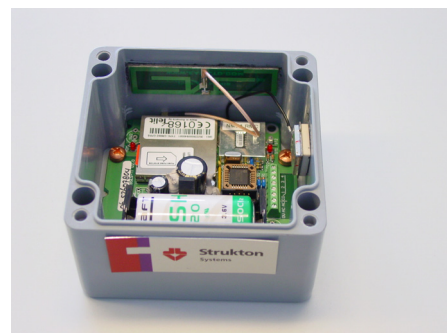
Positions are determined using GPS satellite information accurate to approximately ten metres. The Track-N-Trace unit can be used anywhere in the world subject only to GSM cover.

#### Internal supply

The Track-N-Trace unit has an independent power source, which makes it ideal for equipment with no power on board or equipment that one does not want to continuously connect to the battery.



Webpage



Track-N-Trace unit in heavy-duty housing



**Strukton**  
Rail

[www.struktonrail.com](http://www.struktonrail.com) [info@struktonrail.com](mailto:info@struktonrail.com)

### No maintenance needed for one year

The low-energy microcontroller and a smart algorithm ensure that the battery will last for at least one year. An indication of the battery condition is provided in every message.

### Logistics tool

The Track-N-Trace application embeds seamlessly into any customer's logistics system in addition to its own Track-N-Trace website. The position of the equipment can be provided continuously, no matter if the equipment is on transport, in operation or idle. Equipment planning can therefore be extremely efficient, which may be required in e.g. the case of last-minute changes. And, if one should ever lose track of equipment, it can be traced immediately.

### Applications

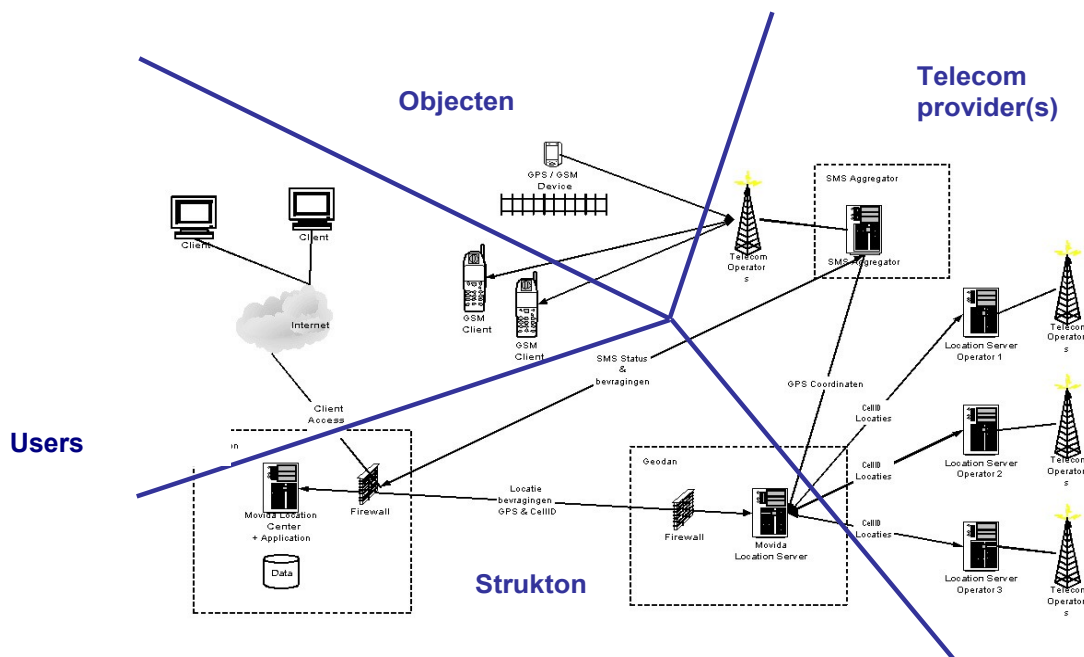
The Track-N-Trace unit has four digital inputs, to which external sensors can be connected. Possible applications include reporting movement and standstill, engine running status, weight, door open/closed detection and access control. The supplementary input is available and shown on the website as soon as a position or status request is received. The module is also applicable in non-rail-related objects that may be lost or stolen.

### Anti theft

The Track-N-Trace unit is an effective defence against the unauthorized removal of expensive installations, such as generators and advanced technical equipment. The modest dimensions and the absence of wiring make the box easy to conceal. And the Track-N-Trace unit is also almost undetectable for GSM scanners.

### Specifications

- Dimensions (lxwxh): 12 x 12 x 8 cm (heavy-duty housing)
- Dimensions (lxwxh): 9 x 11 x 4 cm (standard housing)
- GPS accuracy: approximately 10 metres
- External supply: none
- External antenna: none
- Digital inputs: option for 4 external inputs
- Maintenance: once a year only



Track-N-Trace System Overview

