



POSS® Point Machine Monitoring

Optimise availability, minimise costs and risks

More and more often, rail operators are being judged on availability and punctuality. Maintenance contracts are being concluded based on these performance indicators. A maintenance contractor will undertake to provide the agreed levels of performance and will often have to pay a penalty if he fails to do so.

Optimum availability with minimum costs and risks

The POSS® points monitoring system will monitor your point machines 24 hours a day, 7 days a week. This early warning system will enable you to take the necessary measures before a fault - and function failure - ever happens. The result: optimum availability with minimum costs and risks!

Monitoring & Travel Systems

POSS® has been developed by the Monitoring & Travel Systems division within Strukton Rail. As experts with a wealth of experience (the biggest rail maintenance company in the Netherlands), we know better than any other party about the challenges which arise during day-to-day operations. Our experience forms the basis for new developments in POSS® while you benefit from knowing that your system will always be up-to-date, now and in the future!

Proven Business Case

As rail specialists, we have many years of experience in point machine maintenance. About 3400 point machines, in more than 12 countries, are currently being monitored by POSS®. Empirical figures show that point machines fail approximately 0.7 times a year. About 50% of these faults can be prevented with POSS® point machine monitoring. The social costs as the result of a fault are estimated at 10,000 to approximately 40,000 euros. That means that the system often pays for itself within the first year!

Innovative

POSS® is an innovative and state-of-the-art monitoring system that turns railway maintenance and fault finding from a reactive process into a proactive process. The technology used is entirely Internet-based. The system consists of sensors along the tracks or in the train that transfer data via GPRS/GSM-R or fixed (glass fibre) connections to a centralised database linked to an Internet web server. Running the appropriate application enables users to distribute, analyse, report and/or present the data as required.



Strukton
Systems

www.possinfo.com info@struktonrail.com

Efficiency and Usefulness

POSS® provides improved insights and offers you the opportunity to elevate your entire maintenance process to a higher level:

- POSS® is easy to install and maintain
- POSS® is user-friendly
- POSS® is reliable
- POSS® reduces failures and optimises maintenance
- POSS® is easy to expand
- POSS® provides improved insights
- POSS® provides quality checks on commissioning maintenance and repair work

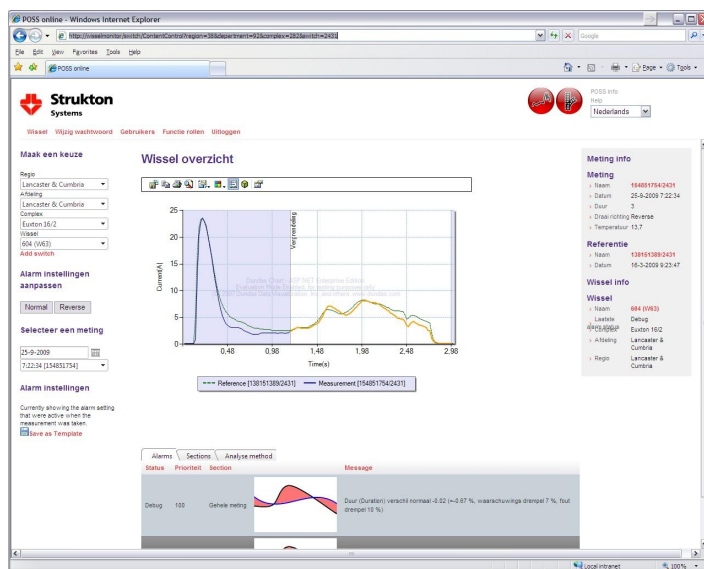
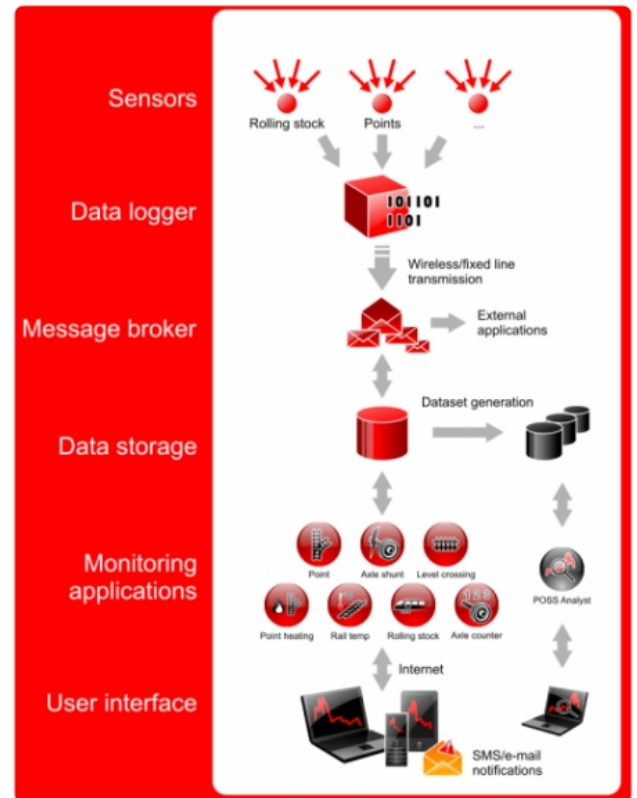
Our offer:

Monitor your Point machines from just 75 euros/month!

We will monitor your points from just 75 euros/month. Naturally, that covers the 'full-service' package which includes hosting the central database, new software releases, service and maintenance and support via our helpdesk.

How would you benefit from using POSS®?

We would be happy to provide more information on the options available and to sit down with you to analyse the benefits you could gain!



Who are we?

The Monitoring & Travel Systems division within Strukton Systems is manned with experienced specialists in the field of information and communication technology. We have the necessary domain knowledge in the field of railways, public transport and electrical energy. Strukton Systems is part of Strukton Rail, a major and innovative European player in the field of rail systems. The company offers a complete range of products and services in the field of rail infrastructure and transport systems. Strukton Rail counts approximately 3000 employees.

Contact

Peter Drenth (Business Unit Manager) +31 (0)6 11 95 81 90. E-mail: peter.drenth@strukton.com.



Welbergweg 60, 7556 PE Hengelo, P.O. Box 258, 7550 AG Hengelo, the Netherlands
Telephone +31 (0)74 255 88 00. Fax +31 (0)74 255 88 01. E-mail: info@struktonrail.com